



NORTH AMERICA SUPPLIER MANUAL

EDIFACT (D96A) DESADV

## 1. Introduction

This document describes how TEN will use the EDIFACT messages for some of the NA Supplier base using EDIFACT messages for EDI transmissions. It also contains information on how to set-up the EDI-connections with TEN

In case you have questions and/or remarks about this document, do not hesitate to contact:

EDI-team e-mail: [taedi@tenneco-automotive.com](mailto:taedi@tenneco-automotive.com)

Depending on business needs, TEN reserves the rights to change and update the contents of this manual in case this might improve the data exchange with suppliers 2.

## 2. Communication with Tenneco

### Completion form

	<b>Customer:</b>  <b>Tenneco (TEN)</b>	<b>Vendor:</b>
<b>1. VAN's</b>		
<b>1.1 Covisint</b>		
Mailbox Number	005036900TA:14	
<b>1.2 Other Van details</b> (if you are using another VAN, please give details. It will allow us to investigate possible connections.)		

In order to set-up the connections, please e-mail this completion form, duly filled in, to [taedi@tenneco-automotive.com](mailto:taedi@tenneco-automotive.com). After receipt and prioritization of this document, we will contact you to proceed with setting-up the connection.

### 3. Glossary of EDI terms

Here you can find the explanation on how to read/interpret the message-definitions

<u>AAA: BBB</u> XXXX CCC	D	EEE	FFF
-----------------------------	---	-----	-----

Where:

AAA = segment identifier

BBB = segment name

XXX = data element (when **bold** then this data element is a composite data element)

CCC = description of the (composite) data element

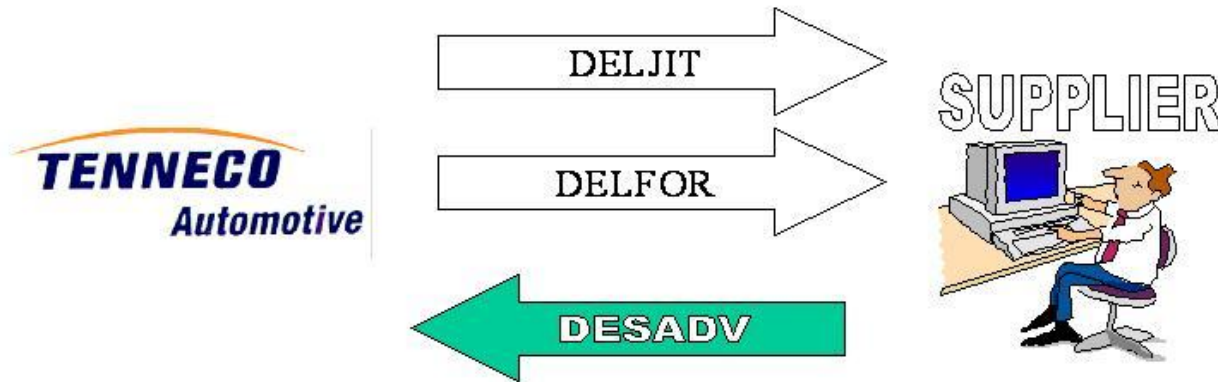
D = status of the (composite) data element (M: mandatory, C: conditional)

EEE = data type and length (A: alphanumeric, N: numeric)

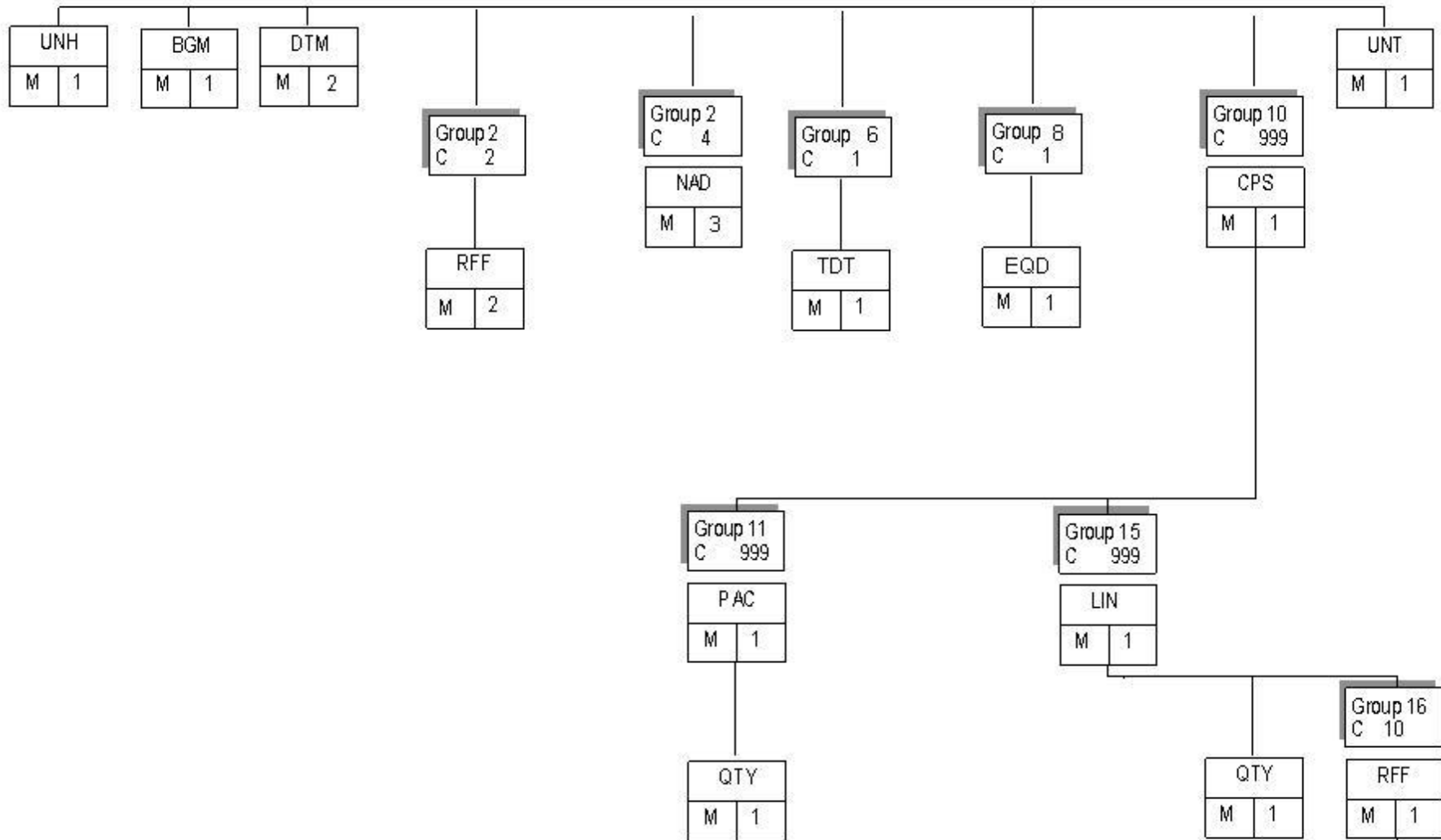
FFF = value of the (composite) data element

#### 4. DESADV

The DESADV message will be used by the seller to inform the receiver about goods dispatched.



4.1 DESADV - Message Hierarchy



## 4.2 DESADV - Message-definition

### UNH: Message header

0062	Message reference number	M	A14		
<b>S009</b>	<b>Message ID.</b>	<b>M</b>		<b>Identifier of message</b>	
0065	Message Type	M	A6		“DESADV”
0052	Message Version number	M	A3		“D”
0054	Message release number	M	A3		“96A”
0051	Controlling agency	M	A2		“UN”
0057	Associated assigned code	M	A6		“A01051”

Example: UNH+1+DESADV:D:96A:UN:A01051

### BGM: Beginning of message

<b>C002</b>	<b>Document message name</b>	<b>M</b>		<b>Identification of document</b>	
1001	Document name, code	M	A3		“351” (= usage of DESADV-message)
1004	Document number	M	A35		Dispatch advice number. For each number TEN expects a new message.

Example: BGM+351+12345

### DTM: Date/time/period

<b>C002</b>	<b>Date and/or time period</b>	<b>M</b>			
2005	Date/time/period qualifier	M	A3		“137” (= date/time when a document/message is issued)
2380	Date/time/period	M	A35		
2379	Date/time/period format	M	A3		“203” (= CCYYMMDDHHMM)

Example: DTM+137:199905051508:203

### DTM: Date/time/period

<b>C002</b>	<b>Date and/or time period</b>	<b>M</b>			
2005	Date/time/period qualifier	M	A3		“11” (= dispatch date)
2380	Date/time/period	M	A35		
2379	Date/time/period format	M	A3		“203” (= CCYYMMDDHHMM)

Example: DTM+11:199905051205:203

RFF: Reference

<b>C506</b>	<b>Reference</b>	<b>M</b>		
1153	Reference qualifier	M	A3	
1154	Reference number	M	A35	“BM” (=Bill Of Lading Number)

Example: RFF+BM:123456

RFF: Reference

<b>C506</b>	<b>Reference</b>	<b>M</b>		
1153	Reference qualifier	M	A3	
1154	Reference number	M	A35	“AAB” (=Pro-forma Invoice Number)

Example: RFF+AAB:123456

**Note:** Pro-forma/Commercial invoice number is required in the ASN for cross-border shipments

NAD: Name and Address (Carrier)

3035	Party qualifier	M	A3	“CA”
<b>C082</b>	<b>Party ID. Details</b>	<b>M</b>		
3039	Party id. Identification	M	A35	Carrier identification code
3055	Code list responsible agency	M	A3	“92”
<b>C058</b>	<b>Name and address</b>	<b>C</b>		
3124	Name and address line	M	A35	Free form name and address description

Example: NAD+CA+TCTC::92+THE CARRIER TRANSPORT COMPANY

NAD: Name and Address (consignee)

3035	Party qualifier	M	A3	“CN”
<b>C082</b>	<b>Party ID. Details</b>	<b>M</b>		
3039	Party id. Identification	M	A35	TEN Plant Number (DUNS Number)
3055	Code list responsible agency	M	A3	“92”
<b>C080</b>	<b>Party Name</b>	<b>C</b>		
3036	Party name	M	A35	

See “Appendix A” for Plant DUNS Number Cross Reference Table

Example: NAD+CN+RES1SY::92



NAD: Name and Address (Seller)

3035	Party qualifier	M	A3	“SE”
<b>C082</b>	<b>Party ID. Details</b>	<b>M</b>		
3039	Party id. Identification	M	A35	Vendor number used by TEN (DUNS Number or Sender ID in the UNB segment)
3055	Code list responsible agency	M	A3	“92”
3207	Country, coded	M	A3	

Example: NAD+SE+100211::92++++++SWE

TDT: Terms of Delivery or Transport

8051	Transport Stage Qualifier	M	A3	“12” (=At Departure)
<b>C220</b>	<b>Mode of Transport</b>	<b>M</b>		
8067	Mode of Transport, Coded	M	A3	See list below for permitted values
8066	Mode of Transport	M	A17	See list below for permitted values

<u>8067</u>	<u>8066</u>
M	Motor (Common Carrier)
P	Private Carrier
R	Rail
AE	Air Express

Example: TDT+12++M

EQD: Equipment Details

8053	Equipment Qualifier	C	A3	“RR” (=Rail Car), “TE” (=Trailer)
<b>C237</b>		<b>C</b>		
8620	Equipment Identification Number	M	A17	

Example: EQD+TE+ABC123456

CPS: Consignment packing sequence

7164	Hierarchical ID Number	M	A12	
7075	Packaging level, coded	M	A3	“1” (= inner), “3” (= outer)

Example: CPS+1++1

PAC: Package

7224	Number of packages	M	N8	
------	--------------------	---	----	--

Example: PAC+4

QTY: Quantity

<b>C186</b>	<b>Quantity Details</b>	<b>M</b>		
6063	Quantity qualifier	M	A3	“52” (= quantity per pack)
6060	Quantity	M	N15	
6411	Measure unit qualifier	M	A3	“PCE” (= pieces, other unit qualifiers are also possible)

Example: QTY+52:48:PCE

LIN: Line item

<b>C212</b>	<b>Item number identification</b>	<b>M</b>		
7140	Item number	M	A35	
7143	Item number type, coded	M	A3	“IN” (= TEN’s item number)

Example: LIN+++1234:IN

QTY: Quantity

<b>C186</b>	<b>Quantity Details</b>	<b>O</b>		
6063	Quantity qualifier	M	A3	“3” (= Cumulative dispatch quantity)
6060	Quantity	M	N15	
6411	Measure unit qualifier	M	A3	“PCE” (= pieces, other unit qualifiers are also possible)

Example: QTY+3:1920:PCE

QTY: Quantity

<b>C186</b>	<b>Quantity Details</b>	<b>M</b>		
6063	Quantity qualifier	M	A3	“12” (= dispatch quantity)
6060	Quantity	M	N15	
6411	Measure unit qualifier	M	A3	“PCE” (= pieces, other unit qualifiers are also possible)

Example: QTY+12:192:PCE

RFF: Reference

<b>C506</b>	<b>Reference</b>	<b>M</b>		
1153	Reference qualifier	M	A3	“ON” (= number of scheduling agreement relevant for the article defined in preceding LIN)
1154	Reference number	M	A35	

Example: RFF+ON:5500002742

*Note: This value should match the value of the RFF+ON segment at the line level sent on the forecast message*

RFF: Reference

<b>C506</b>	<b>Reference</b>	<b>M</b>		
1153	Reference qualifier	M	A3	“AAN” (= delivery schedule number)
1154	Reference number	M	A35	

Example: RFF+AAN:3

*Note: This value should match the value of the RFF+AAN segment at the line level sent on the forecast message*

UNT: Message trailer

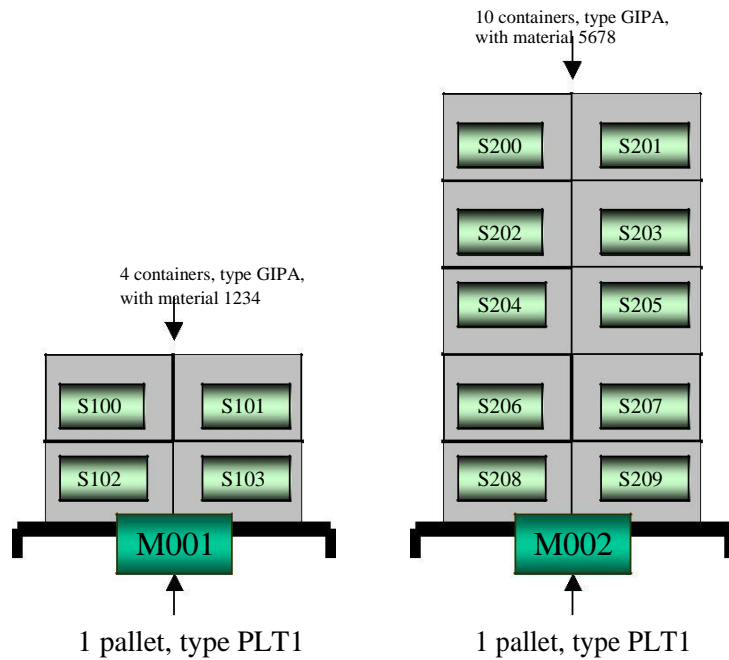
0074	Number of segments in the message	M	N6	
0062	Message reference number	M	A14	

Example: UNT+26+1

### 4.3 DESADV - Examples

**Situation:**

Seller 100211, country Sweden, has dispatched goods to TEN plant RES1SY (consignee). Carrier is “The Carrier Transport Company (TCTC)”.  
192 pieces of part number 1234 (buyers’ reference) are dispatched in 4 containers. All containers are loaded on the first pallet.  
410 pieces of part number 5678 are dispatched in 10 containers. All these containers are loaded on the second pallet.  
All pieces refer to scheduling agreement 5500002742 dated 01.01.2009 All pieces are dispatched on 05/05/2009



Corresponding message structure:

UNH+1+DESADV:D:96A:UN:A01051  
BGM+351+12345  
DTM+137:200905050506:203  
DTM+11:200905050505:203  
RFF+BM:123456  
RFF+AAB:123456  
NAD+CA+TCTC::92+THE CARRIER TRANSPORT COMPANY  
NAD+CN+RES1SY::92  
NAD+SE+100211::92++++++SWE  
TDT+12++M  
EQD+TE+ABC123456

CPS+1++1  
PAC+4  
QTY+52:48:PCE  
LIN+++1234:IN  
QTY+12:192:PCE  
RFF+ON:5500002742  
RFF+AAN:3

CPS+2++1  
PAC+10  
QTY+52:41:PCE  
LIN+++5678:IN  
QTY+12:410:PCE  
RFF+ON:5500002742  
RFF+AAN:3

CPS+3++3  
PAC+2++PLT1::92

UNT+34+1  
UNZ+1+31

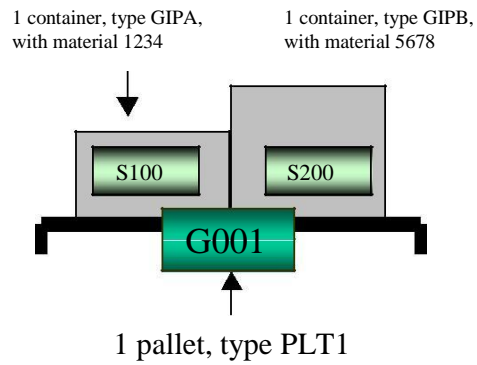
Situation:

Seller 100211, country Sweden, has dispatched goods to TEN plant RES1SY (consignee). Carrier is “The Carrier Transport Company (TCTC)”.

- 10 pieces of part number 1234 (buyers’ reference) are dispatched in first container.
- 10 pieces of part number 5678 are dispatched in second container.

Both containers are loaded on same pallet

All pieces refer to scheduling agreement 5500002742 dated 01.01.2009 All pieces are dispatched on 05/05/2009



Corresponding message structure:

UNH+1+DESADV:D:96A:UN:A01051  
BGM+351+12345  
DTM+137:200905051234:203  
DTM+11:200905050925:203  
RFF+BM:123456  
RFF+AAB:123456  
NAD+CA+TCTC::92+THE CARRIER TRANSPORT COMPANY  
NAD+CN+RES1SY::92  
NAD+SE+100211::92++++++SWE  
TDT+12++M  
EQD+TE+ABC123456

CPS+1++1  
PAC+1+  
QTY+52:10:PCE  
LIN+++1234:IN  
QTY+12:10:PCE  
RFF+ON:5500002742  
RFF+AAN:3

CPS+2++1  
PAC+1  
QTY+52:10:PCE  
LIN+++5678:IN  
QTY+12:10:PCE  
RFF+ON:5500002742  
RFF+AAN:3

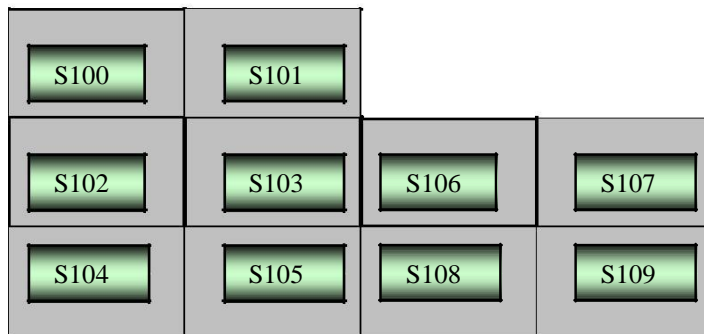
CPS+3++3  
PAC+1++PLT1::92

UNT+33+1  
UNZ+1+31

Situation:

Seller 100211, country Sweden, has dispatched goods to TEN plant RES1SY (consignee). Carrier is “The Carrier Transport Company (TCTC)”.  
100 pieces of part number 1234 (buyers’ reference) are dispatched in one container.  
No pallets are used  
All pieces refer to scheduling agreement 5500002742 dated 01.01.2009  
All pieces are dispatched on 05/05/2009

10 containers, type GIPA,  
with material 5678





Corresponding message structure:

UNH+1+DESADV:D:96A:UN:A01051  
BGM+351+12345  
DTM+137:200905052045:203  
DTM+11:200905052045:203  
RFF+BM:123456  
RFF+AAB:123456  
NAD+CA+TCTC::92+THE CARRIER TRANSPORT COMPANY  
NAD+CN+RES1SY::92  
NAD+SE+100211::92++++++SWE  
TDT+12++M  
EQD+TE+ABC123456

CPS+1++1  
PAC+10  
QTY+52:10:PCE  
LIN+++1234:IN  
QTY+12:100:PCE  
RFF+ON:5500002742  
RFF+AAN:3

UNT+19+1  
UNZ+1+31